



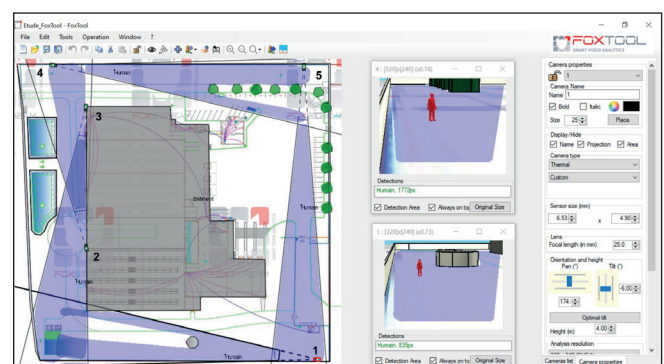
# FoxTool

## Project Design Study

FoxTool represents the ideal tool to design a project and concretely understand what material will be needed. The 3D possibilities help simulate the site's specific features by adding object blocks to represent walls, buildings or cars. You can observe the impact on the detection and adjust accordingly the placement of the cameras, choice of lens or manufacturer.

The FoxTool software was developed to generate, on the basis of a ground plan, the prerequisites for camera locations to get the best perimeter protection possible. It simulates obstacles such as walls, poles... to observe the impact on the camera's visibility.

The **3D possibilities** take into account the camera height, inclination, the focal length, the sensor size and the areas on the ground that FoxVigi can analyze. FoxTool studies therefore represent a complete & concrete security solution: by involving the client and not only the integrator, the sales efficiency is increased.



## Key features

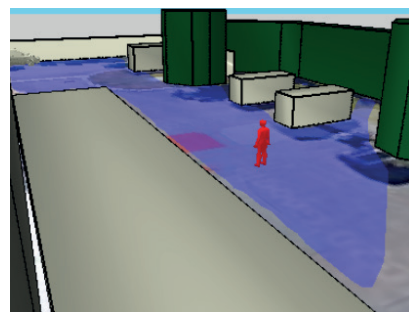
➤ **3D objects** help simulate the site's specific features and bring more reality to your project. By adding object blocks to represent walls, buildings or cars, observe the impact on the detection and adjust accordingly the cameras' locations or choice of lens/manufacture.

➤ **Camera list:** a list of the main manufacturers is regularly updated, to make it easier and faster when building your Security Solution. Simply select the manufacturer, then the camera model and lens and observe the difference in the area of detection. **FoxTool is the only multi-brand study tool on the market!**

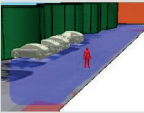


➤ **Map Export:** the map you create can be exported as an image. Easy, convenient, intuitive.

➤ **Comments:** comments can be added to the map to facilitate exchanges between client/integrator, ask questions, bring up an issue, highlight a specific need, etc.

➤ **Detailed Reports:** reports contain further information, such as the description of each camera, useful detection distances, 3D images and a recap.



## Reports

Cameras configuration	
Camera: 1	
General	
Sensor type: Thermal	
Model: Custom	
Sensor size: 6.5 mm x 4.9 mm	
Analysis resolution: 320 x 240 (QVGA)	
Focal length: 13 mm	
Positioning	
Height: 6m	
Tilt: -12°	
Orientation: 199°	
Detection	
Non-detection zone below the camera: 15.5 m	
Range: 65.4 m	
Camera: 2	
General	
Sensor type: Thermal	
Model: Custom	
Sensor size: 6.5 mm x 4.9 mm	
Analysis resolution: 320 x 240 (QVGA)	
Focal length: 7 mm	
Positioning	
Height: 6m	
Tilt: -22°	
Orientation: 334°	
Detection	
Non-detection zone below the camera: 7.4 m	
Range: 37.5 m	
Camera: 3	
General	
Sensor type: Thermal	
Model: Custom	
Sensor size: 6.5 mm x 4.9 mm	
Analysis resolution: 320 x 240 (QVGA)	
Focal length: 25 mm	
Positioning	
Height: 3m	
Tilt: -6°	
Orientation: 89°	
Detection	

FoxTool allows to export and print pdf reports that summarize the different camera information such as the description of each camera (manufacturer, model), the distance of the non-detected area, and the maximum distance of detection.

A 3D image of the camera view is joined to each camera description.

At the end of the report, a summary recaps all the cameras.

Synthesis				
Sensor type	Manufacturer	Model	Focal length	Quantity
Thermal	Custom	Custom	7mm	3
Thermal	Custom	Custom	10mm	3
Thermal	Custom	Custom	13mm	1
Thermal	Custom	Custom	25mm	1

## Download FoxTool

To download FoxTool for free, please contact us via the website:

<http://www.foxstream.us.com/contact/>

or at [foxtool@foxstream.us.com](mailto:foxtool@foxstream.us.com) or +33 427 118 030.

### In brief

- Multi-brand study tool
- Can integrate your camera specifications
- 3D features for a VR view
- Detailed Reports
- Maps and reports can be exported.